



Partnership and Place Overview and Scrutiny Committee

Wednesday 25 July 2012 at 7.30 pm

Committee Room 4, Brent Town Hall, Forty Lane,
Wembley, HA9 9HD

Membership:

Members

Councillors:

Van Kalwala (Chair)
Clues (Vice-Chair)
Harrison
Hopkins
Naheerathan
HB Patel
RS Patel
Krupa Sheth

first alternates

Councillors:

Ogunro
Matthews
Oladapo
Lorber
Al-Ebadi
Colwill
Chohan
Aden

second alternates

Councillors:

Daly
Allie
Ketan Sheth
Leaman
Pavey
Kansagra
S Choudhary
Denselow

For further information contact: Lisa Weaver, Democratic Services Officer
020 8937 1358, lisa.weaver@brent.gov.uk

For electronic copies of minutes, reports and agendas, and to be alerted when the minutes of this meeting have been published visit:

www.brent.gov.uk/committees

The press and public are welcome to attend this meeting

Agenda

Introductions, if appropriate.

Apologies for absence and clarification of alternate members

Item	Page
1 Declarations of personal and prejudicial interests	
Members are invited to declare at this stage of the meeting, any relevant financial or other interest in the items on the agenda.	
2 Deputations	
3 Minutes of the previous meeting held on 14 June 2012	1 - 4
The minutes are attached.	
4 Matters arising	
5 Crime Updates	5 - 20
This report sets out how key crime information for Brent is collected and provides a template for the collection of key statistics to be reported to the committee on a regular basis. It also provides an in-depth report on Burglary in Brent	
Ward Affected: All Wards	Contact Officer: Genny Renard, Brent Community Safety Partnerships Tel: 020 897 1028 genny.renard@brent.gov.uk
6 Integrated Offender Management	
Members will receive a presentation on the Integrated Offender Management project	
7 Changing the Delivery of Crime Reduction - Local Joint Action Groups	21 - 30
At the last meeting the Partnership & Place asked for a more detailed report on the Changing the Delivery of Crime Reduction project outline in the Partners for Brent progress report. This report does that by focusing on the introduction of the Local Joint Action Groups which are designed to streamline the delivery structure of Brent's Crime Prevention Strategy	

group

Ward Affected: All Wards

Contact Officer: Genny Renard, Brent
Community Safety Partnerships

Tel: 020 897 1028

genny.renard@brent.gov.uk

8 Partnership and Place Overview and Scrutiny Work Programme 31 - 32

This report sets out some options for the Partnership and Place Overview and Scrutiny Committee work programme.

9 Date of next meeting

The next meeting of the Partnership and Place Overview and Scrutiny Committee meeting is scheduled to take place on 17 October 2012

10 Any other urgent business

Notice of items raised under this heading must be given in writing to the Democratic Services Manager or his representative before the meeting in accordance with Standing Order 64.



Please remember to **SWITCH OFF** your mobile phone during the meeting.

- The meeting room is accessible by lift and seats will be provided for members of the public.
- Toilets are available on the second floor.
- A public telephone is located in the foyer on the ground floor, opposite the Porters' Lodge

This page is intentionally left blank



MINUTES OF THE PARTNERSHIP AND PLACE OVERVIEW AND SCRUTINY COMMITTEE

Thursday 14 June 2012 at 7.30 pm

PRESENT: Councillor Van Kalwala (Chair), and Councillors Colwill (substituting for HB Patel) Harrison, Hopkins and Krupa Sheth

Also present: Councillors Butt, Hirani and Jones

Apologies for absence were received from: Councillors Clues and HB Patel.

1. Declarations of personal and prejudicial interests

None

2. Minutes of the previous meeting held on 29 March 2012

The minutes of the meeting held on 29 March 2012 were approved as a correct record of proceedings.

3. Matters arising

It was noted that complex families were now referred to as troubled families.

4. Ward working 2011/12

The Ward Working Manager Christine Collins updated the committee on the work of the Ward Working Team in the year 2011/12 including; consultation exercises, expenditure, 23 ward walks, 35 outreach events with partners, numerous festivals and fares and 46 meetings of community groups and Tenants' and Residents' Associations to hear their concerns and ideas regarding their areas.

The Ward Working Manager detailed the consultation undertaken throughout the year comprising; a dragons den style priority setting event, 42 neighbourhood bulletins with 394 tear off response slips being received and utilisation of the Brent Council website. Additionally, web mapping had been produced as a way of displaying information visually and detailing the projects funded in each ward.

It was noted that an underspend of £619 was achieved last year with 105 projects benefitting from just under £420,000 with voluntary sector group funding of £250,000 and a total spend of over £800,000 on community projects.

A variety of challenges and achievements had taken place throughout the year with a timetable designed to ensure spending was carried out in a timely manner and engagement of alternative services and funding for projects that the ward working team were unable to support. Additionally, the team continued to achieve

partnership working and work streams regarding housing associations had been greatly assisted by participation in Local Joint Action Groups (LJAGs).

It was noted that litter was a key concern for residents and although previously an area the team felt they could not help, the team had now involved several initiatives and communications to tackle the issue and change the culture towards littering. During discussions, members queried the use of friends of the park schemes and dedicated litter picker teams to help keep parks clean. It was noted that some of these groups and initiatives already exist and the ward working team were happy to support them.

Councillor Jones highlighted that a variety of local projects had been developed with lessons learnt being shared across projects and wards and a greater variety of community groups accessing the funding available.

It was clarified that although community groups could access funding more than once, it had to be used for different projects. It was queried whether communication with youth could be improved and the Ward Manager explained that social media was being used in an attempt to be more active as well as looking at other communication methods. The Chair challenged the ward working team to address youth participation in consultation for the next year.

It was queried whether there was a strategy in relation to partnership working. It was explained that partnership working varied across wards and that with the removal of the alley-gating team, there were a variety of queries regarding the matter. It was clarified that a set of criteria was currently being formalised and would be circulated to members following consultation with the Environmental Health team.

Members thanked the ward working team for their efforts and achievements over the past year.

5. Partners for Brent Executive progress report - quarter 4

The Partnerships Co-ordinator, Policy and Regeneration Officer Jo McCormick reported on progress made within quarter four for voluntary, public and private sector partners. An update was provided on the progress made within each project including asset management, the intelligence hub, Brent Sustainability Forum projects and violence against women and girls. It was highlighted that the overarching voluntary sector strategy had been put on hold due to implementation of key changes needing to be integrated, with the overall intention of linking several funding stream.

During the discussion, members queried how progress would be reported back to members. It was noted that Jenny Reynolds regularly received reports on progress from each ward which was fed into a centralised borough wide document.

It was further clarified that work was continuing with schools to reduce energy consumption with two sets of work being carried out with home owners and businesses to address climate change and energy usage with funding provided by the GLA.

It was queried who the lead on the Brent Employer Forum was and whether there was any member involvement. It was clarified that there was member involvement which varied depending upon the issue, with the forum being chaired by VJABI associates, and linkages with the strategic forum.

The Chair enquired what work was being undertaken around priorities such as employment and housing in relation to the welfare cuts. Phil Newby Director of Strategy, Partnership and Improvements explained that an exercise looking at an employment package was being undertaken with an expert being utilised to help build propositions around employment. He highlighted that housing was key, particularly with social mobility and people within social housing having the opportunity to progress within their career. It was noted that a report would be brought back to the Committee in the autumn.

Members queried how many had benefitted from the supply chain project. It was noted that specific information was not available to hand however small catering companies had benefitted and the information would be made available to members. It was noted that Park Royal attended the employment forum when necessary.

Members requested feedback regarding the suite of troubled family's projects. It was highlighted that there was a variety of initiatives taking place across the Council and whether any work was being undertaken to address possible linkages. It was reported that linkages were picked up through the One Council Project, with key members being within the same department. Phil Newby explained that several interlocking themes were emerging and although independent but similar to each other, they were hoping to bring these issues together.

6. Partnership and Place Overview and Scrutiny Committee work programme

The Chair explained that the meetings were currently themed and the next meeting would focus on crime. Councillor Hirani queried whether a task and finish group was to be set up regarding Police Timings and it was noted that requests for members would take place.

It was queried whether private sector landlords, letting through RSL, were recorded within the indicator. It was clarified that all leased property through RSL whether privately owned or not would be included.

Members highlighted that parking was an area of interest to residents however, it was explained that this issue had been picked up within the One Council Overview and Scrutiny work programme although could additionally be reported to the partnership and Place Overview and Scrutiny Committee with the Senior Policy Officer Strategy Partnership and Improvements advising future Committee dates.


7. Date of next meeting

The next meeting would be taking place on Wednesday 25 July 2012, at 7.30pm.

8. Any other urgent business

The meeting closed at 8.50 pm

Z Van Kalwala
Chair

	<p style="text-align: center;">Partnership & Place Overview & Scrutiny Committee 25 July 2012</p> <p style="text-align: center;">Report from the Director of Strategy, Partnership & Improvement</p>
Wards Affected: ALL	
Crime Update Report	

1.0 Summary

- 1.1 This report sets out how key crime information for Brent is collected and provides a template for the collection of key statistics to be reported to the committee on a regular basis. It also provides an in-depth report on Burglary in Brent

2.0 Recommendations

- 2.1 That the committee:
- note the report and monitor future developments
 - agree to develop the targets based on quarter one and two data
 - include the report on the next Crime Survey for England and Wales (CSEW) on its work programme

3.0 Background

- 3.1 Members of the committee will recall that we have been working together to identify what data to monitor. For The Partnership and Place Committee the purpose of the crime data report is to enable members to gain a picture of how secure people feel in their homes, the level of violence in the community and any barriers to building a vibrant business community. It is also an indication of the performance of local agencies.
- 3.2 It has been agreed that the template at appendix A, will be updated and circulated prior to each meeting of the Partnership and Place Committee.

There will be brief accompanying report. Should, as in this instance, there be any statistically significant changes an additional section will be added that provides more in depth analyse of the problem or change.

- 3.3 Members of the Committee will note that on this occasion a more in-depth report on burglary has been attached, as Brent has seen a rise in this crime. This is particularly concerning as our group of most similar boroughs have seen a fall in residential burglary.
- 3.4 In addition Brent and Harrow have for the last two years been part of “ethical reporting” project; this meant that the figures for our two boroughs appeared higher. This project has now been put in place in all boroughs across London. Therefore, in this financial year Harrow and Brent’s data should have remained broadly the same while all others boroughs should have seen a dramatic rise.

4.0 Gathering Reliable Evidence

- 4.1 There are two key crime data sources, Police recorded crime and the British Crime Survey for England and Wales now called Crime Survey for England and Wales (CSEW)
- 4.2 Recorded crime gives an accurate picture of crime types that are well reported. Even here there are caveats as many crimes are not reported for a variety of reasons¹.
For example, reliable academic evidence shows people who have no household insurance, under-report burglary. On the other hand, the National Housing Federation in 2009 found that tenants frequently report break-ins or attempted burglary to avoid being asked to pay for criminal damage to their property. The Federation estimated this could account for up to 35% of all burglaries in social and privately rented stock.
- 4.3 Of course these factors are important when looking at the micro details to plan services but they do not account for the percentage increase experienced by the borough.

¹

The Under-Reporting of Property Crime: A Microeconomic Analysis. [MacDonald, Ziggy](#), 1998 University of Leicester

- 4.4 The other main supplier of data is the survey formally known as The British Crime Survey or BCS. In April 2012: the British Crime Survey (BCS) changed its name to the Crime Survey for England and Wales (CSEW)
- 4.5 This is a systematic victim study, currently carried out by BMRB Limited on behalf of the Home Office. The BCS/CSEW seeks to measure the amount of crime in England and Wales by asking around 50,000 people aged 16 and over (as of January 2009), living in private households, about the crimes they have experienced in the last year. From January 2009, 4,000 interviews were also conducted each year with children 10–15 years old, although the resulting statistics remain as an experiment with no substantial data being released.
- 4.6 The CSEW is primarily a 'victimisation' survey, in which respondents are asked about the experiences of property crimes of the household (e.g. burglary) and personal crimes (e.g. theft from the person) which they themselves have experienced. The reference period to which these questions relate is from the first of January in the calendar year preceding the CSEW, up to the date of interview. The reference period and indeed the wording of the series of questions, which are asked to elicit victimisation experiences, have been held constant throughout the series of CSEW surveys.
- 4.7 Because members of the public are asked directly about victimisation, the CSEW provides a record of the experience of crime which is unaffected by variations in the behaviour of victims about reporting the incident to the police and variations over time and between places in the police practices about recording crime.
- 4.8 The scope of the CSEW goes well beyond the counting of criminal incidents, although it is for this estimate that it has become established as a definitive source of information. In order to classify incidents, the CSEW collects extensive information about the victims of crime, the circumstances in which incidents occur and the behaviour of offenders in committing crimes. In this way, the survey provides information to inform crime reduction measures and to gauge their effectiveness.
- 4.9 The CSEW has been successful at developing special measures to estimate the extent of domestic violence, stalking and sexual victimisation, which are probably the least-reported to the police but among the most serious of crimes in their impact on victims.
When the new survey is published a report will be prepared for the members of the Partnership and Place committee.

5 Data Review

- 5.1 The Police data available is calculated on a rolling year to date so there is change that can be noted from the previous quarter. Council data is available and noted in the table.
- 5.2 The number of offences are recorded as is the number of Sanction and Detection and the percentage of clear ups that number represents.
- 5.3 The Committee is keen to look at young people and their involvement with the Criminal Justice System as both victims and perpetrator. The key crime committed by young people is Robbery; hence monitoring this will provide useful insight, unfortunately, the Youth Offending Team are going to provide the data they have not been able to do so for this report, but will be included in the next meeting.

4.4 As this is new template it suggested that the first six months data is reviewed and then the targets are defined by the committee.

6 Next Steps

- 6.1 Prior to the next meeting the youth crime related data will be gathered and put into the next report.

Background Papers

Contact Officers

Genny Renard
Head of Integrated Community Safety
Genny.renard@brent.gov.uk

Burglary in Brent – Trends in the data and actions taken to reduce offences

July 2012

Executive summary:

This short report provides information on the increases in burglary reported across Brent and actions being taken to arrest this increase. Key points include:

- Since 2010/12 Brent has seen an increase in burglary offences both in 2011/12 and again so far in 2012/13. Burglary increased 10.0% in 2011/12 and is up 8.9% so far in 2012/13.
- This has been driven by an increase in residential burglary, which increased 17.0% in 2011/12 and 12.7% so far in 2012/13 (up to May). Non-residential burglary has remained static over the same period.
- While this is clearly a cause for concern, more recent intelligence suggests that the increase has reduced somewhat.
- In addition, while overall London figures point to a reduction in burglary, comparing Brent with other London boroughs places it 23rd out of 32 in terms of burglary performance.
- The period between October and March was when a large part of the increase over 2011/12 occurred.
- In 2011/12, Harlesden, Brondesbury Park and Stonebridge saw the highest number of burglary offences, accounting for about a fifth of the total.
- Thirteen wards saw increases in burglaries between 2010/11 and 2011/2012, while eight saw decreases. The largest increases were in Alperton, Brondesbury Park and Sudbury – all with increases of more than 25%
- Much work is being undertaken by Brent to reduce burglary and a number of priority actions have been implemented. This includes:
 - Targeting of the most active burglars in Brent (including beginning eviction proceedings where an individual lives in social housing)
 - Strengthening of communal doors in blocks of flats owned by registered social landlords
 - Events to promote prevention to the public and registered social landlords
 - Forensic retrieval in known hotspots
 - Targeted work in housing estates particularly affected by burglary
- So far in 2012/13, the sanction detection rate for burglary (i.e. burglary offences which result in an individual being charged for the offence) in Brent is 15.0% and 17.5% for residential burglary.
- The sanction detection rate for burglary in Brent is similar to that for London as a whole and has been better than the London average since 2011/12.
- Initial information suggests suspects are increasingly either; young people from the local area associating with gangs and highly organised and mobile suspects who are operating across a number of boroughs. More detailed information is currently being compiled to allow further analysis.
- Initial information suggests that the majority of offences occur during the day with the main point of entry being the front of the property. A number of blocks of flats where a communal door can be breached and a number of flats burgled have been increasingly targeted. Again more detailed data is currently being compiled.

- Live data will be closely monitored over the next few weeks. Additionally, more detailed data is being compiled by the Metropolitan Police Service which will be incorporated into Brent's strategic crime needs assessment. This will be completed in September 2012 and longer term plans and strategies to address burglary will be developed based on findings from this needs assessment.

1 Introduction

Brent Council is committed to addressing increases in burglary. This short report establishes:

- **The context:** Data is presented looking at trends in burglary offences being committed in Brent, both overall and at a ward level. There is also initial information presented on perpetrators and the types of properties targeted.
- **Current and future actions to reduce burglary:** This section looks at what actions are being taken to reduce burglary in Brent led by the Integrated Community Safety Team and the Metropolitan Police Service. It also discusses a set of future actions that were agreed at a meeting between these stakeholders on 28th June 2012. These actions are being implemented across the next month with the intention of immediately impacting burglary.

This is an interim report. Brent's strategic crime needs assessment which is currently being developed by the Integrated Community Safety Team will provide more comprehensive information about the profile of suspects and the characteristics of offences. The needs assessment will be completed for September 2012 with an action plan for development on the basis of its findings.

2 The context

2.1 Burglary offences in Brent compared to London

Scorecard data from the Metropolitan Police indicates that as of 27th June, across London as a whole¹, residential burglary was down by 3.6% for the financial year to date (compared with the previous year) and non-residential burglary was down by 0.4%. However, in Brent residential burglary had increased 6.7% compared to the previous year while non-residential burglary had fallen by 0.4% (i.e. exactly in line with the overall London figures).

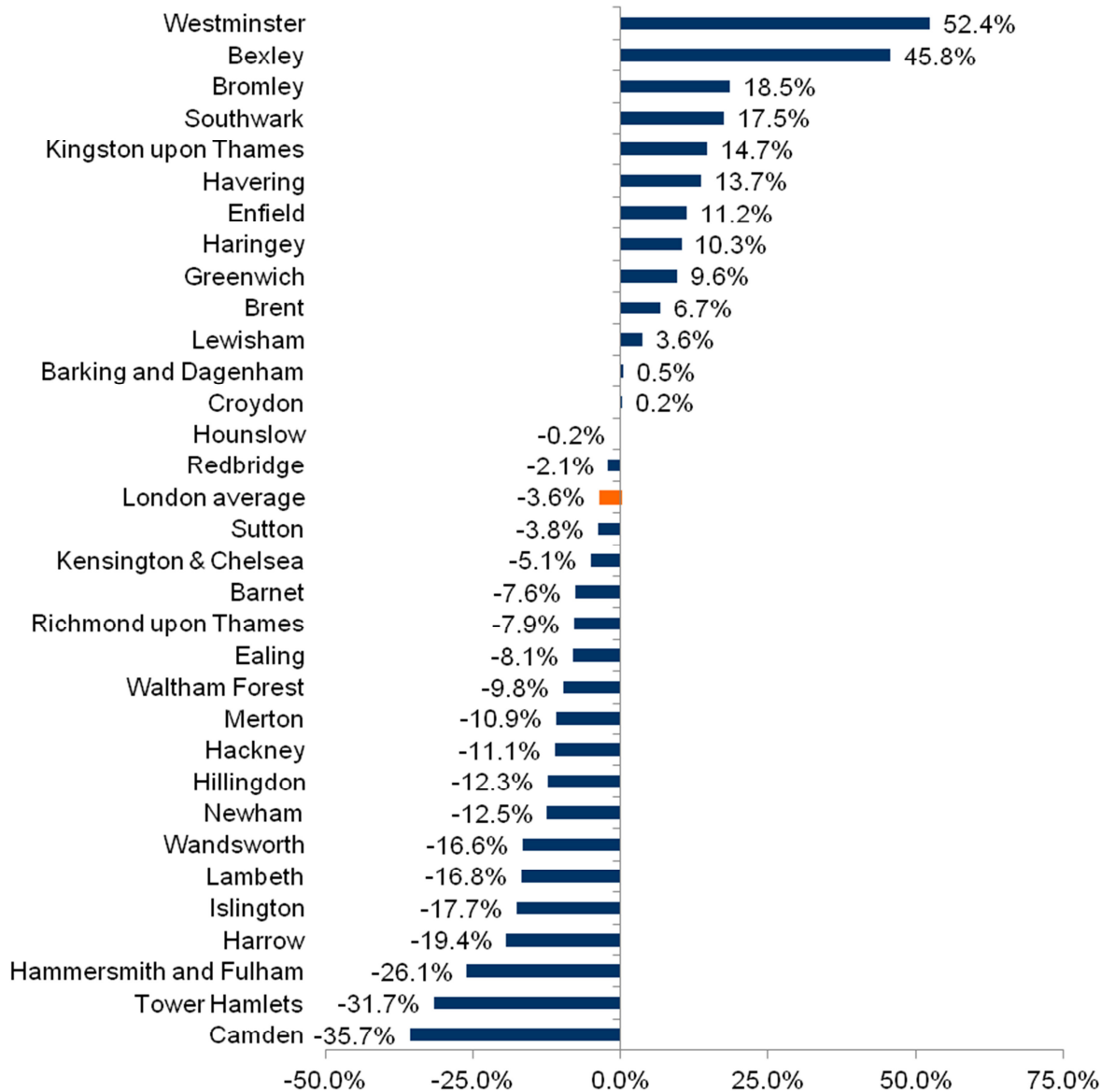
However, as Figure 1 makes clear, London-wide figures mask significant variation between boroughs. Specifically, this shows that so far this year, residential burglary increased by as much as 52.4% in Westminster and decreased by as much as 35.7% in Camden. Nine other boroughs have seen increases in residential burglary larger than Brent. This locates Brent at 23rd out of 32 in terms of performance in reducing burglary in London.

¹ Excluding City of London.

With the exception of Westminster, Figure 1 also makes clear that all other boroughs neighbouring Brent (Barnet, Camden, Ealing, Hammersmith & Fulham, Harrow and Kensington & Chelsea) have all reported decreases in residential burglary so far this year.

It is important to note, that these figures should be taken in the context that this financial year is still less than three months old. Any increases may reflect random fluctuation in the figures which may even out over the remainder of the year.

Figure 1: Changes in residential burglary for financial year to date compared with previous financial year by borough



Source: MPS TP Scorecard up to 27th June 2012

2.2 Trends in Burglary Offences in Brent

Figure 2² looks at trends in burglary offences using CRIS³ data and shows that the previous financial year (2011/12) saw a 10.0% increase in burglary in Brent compared to 2010/11. This was caused by a 17.0% increase in residential burglary with non-residential burglary recording a slight decrease of 0.1%.

Focusing on the first two months of the financial year, Figure 2 shows that burglary overall is up 8.9% in 2012/13 (compared to 2011/12) and was up 12.0% in 2011/12 (compared to 2010/11). This was driven by the increases seen in residential burglary (12.7% for 2012/13 compared to 2011/12 and 15.4% for 2011/12 compared to 2010/11). Non-residential burglary remains static.

In summary, a clear pattern emerges of a rising trend in burglary across Brent, driven by increases in residential burglary.

Figure 2: Trends in burglary offences in Brent 2010 to 2012 (Figures in brackets indicate percentage change on previous year)

Figure	2010 to 2011	2011 to 2012	2012 to 2013
Whole financial year			
Total number of burglary offences	3,613	3,975 (10.0%)	-
Total number of residential burglary offences	2,618	3,064 (17.0%)	-
Total number of non-residential burglary offences	995	911 (-0.1%)	-
April to May			
Total number of burglary offences	540	605 (12.0%)	659 (8.9%)
Total number of residential burglary offences	376	434 (15.4%)	489 (12.7%)
Total number of non-residential burglary offences	164	171 (0.0%)	170 (-0.1%)

Source: Metropolitan Police Service CRIS data

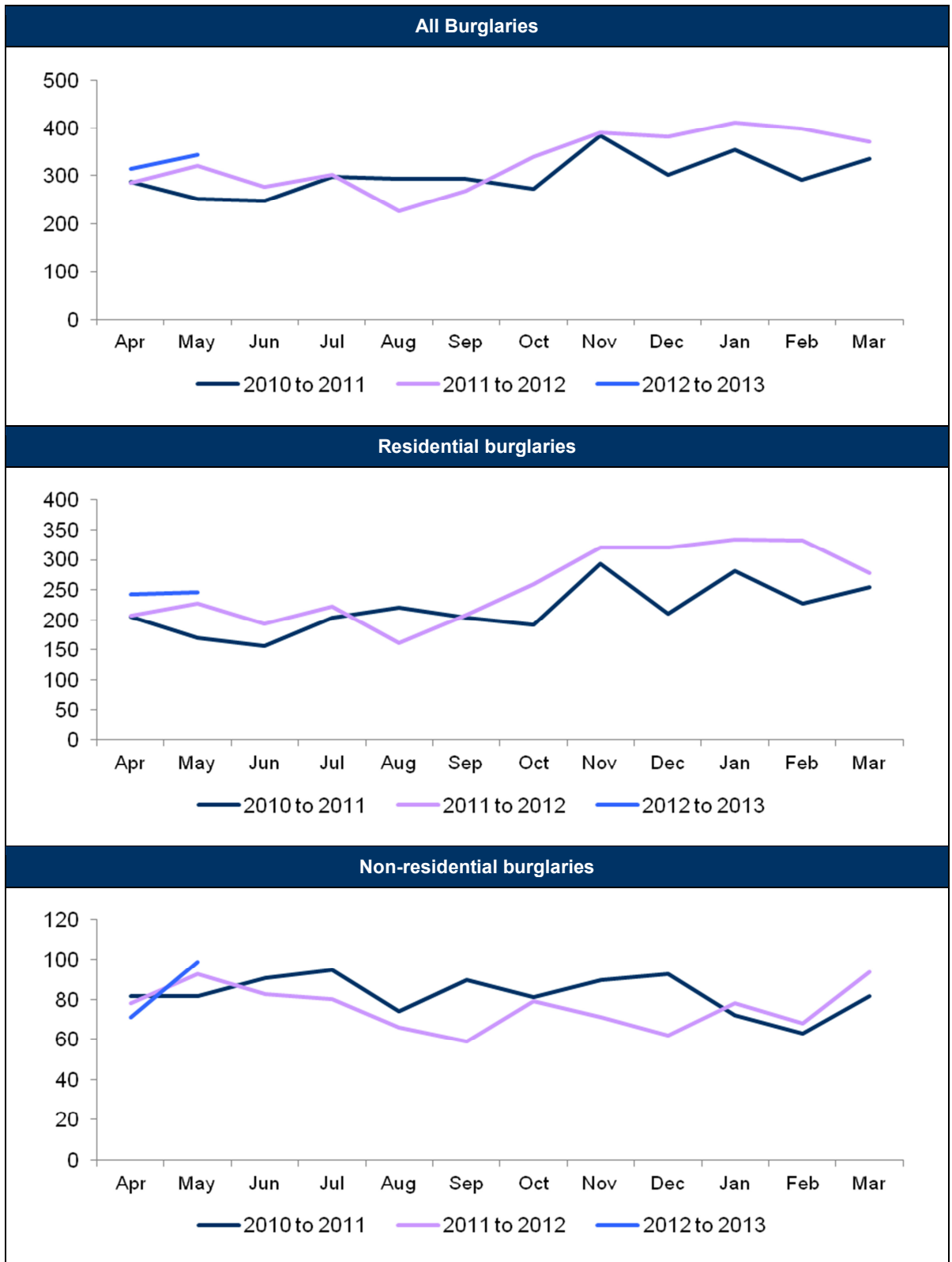
Figure 3 presents monthly trend data for Brent over the period 2010 to 2012. This shows that October to March is characterised by significant growth in residential burglary (i.e. the second half of the financial year), particularly in 2011/12.

Figure 3 also makes clear that both total and residential burglary has been higher in the first two months of 2012/13 than in either of the previous two years.

² Please note, this data comes from the CRIS database and only covers up to May 2012. Figures from the TP Scorecard cover most of June and will therefore differ.

³ Crime Reporting Information System – a database belonging to the Metropolitan Police Service.

Figure 3: Monthly trends in burglary offences in Brent 2010 to 2012 (Figures in brackets indicate percentage change on previous year)

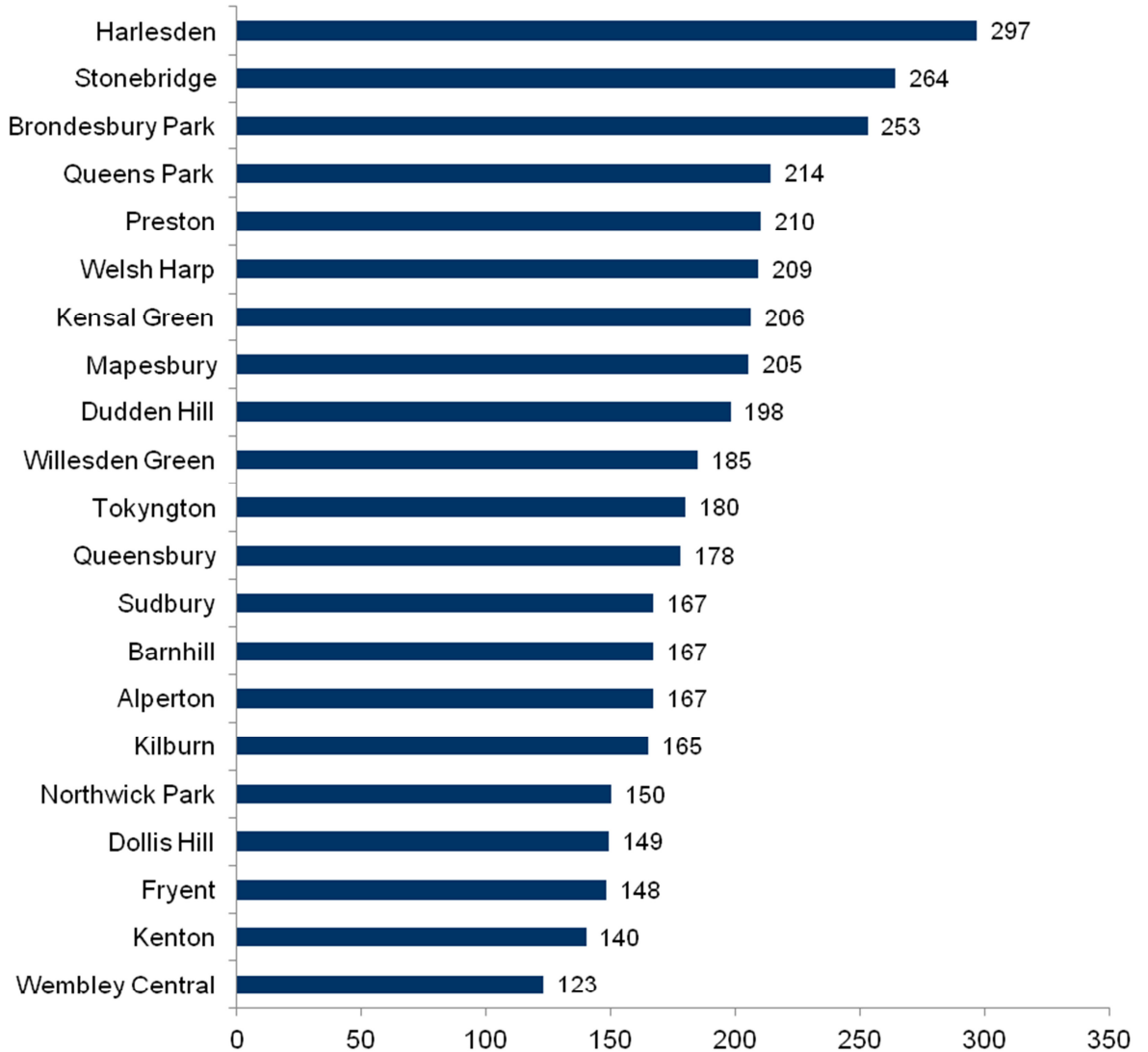


Source: Metropolitan Police Service CRIS data

2.3 Geographical variation in burglary offences

Figure 4 shows that Harlesden, Stonebridge and Brondesbury Park wards observed the highest number of reported burglaries (or about 20.5% of all offences in 2011/12, while Fryent, Kenton and Wembley Central have lower numbers of reported burglaries.

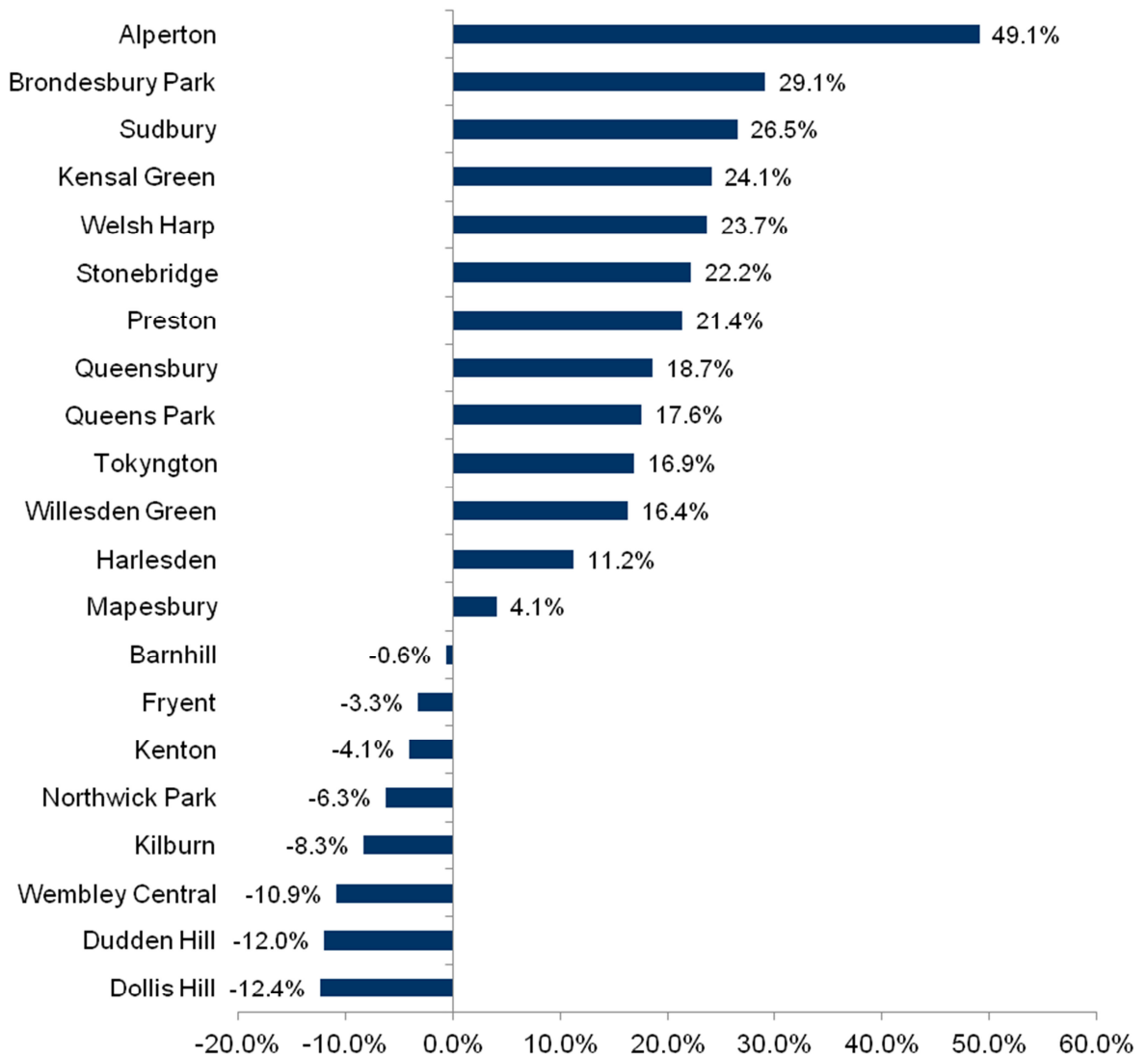
Figure 4: Total number of burglaries by ward in Brent in 2011/12



Source: Metropolitan Police Service CRIS data

Figure 5 shows that between 2010/11 and 2011/12, the total number of burglaries increased in thirteen wards and decreased in eight wards. The wards that observed the largest increases in burglary were Alperton, Brondesbury Park and Sudbury – all of which had reported increases over 25%. Wembley Central, Dudden Hill and Dollis Hill all had reported decreases exceeding 10%.

Figure 5: Percentage change in total number of burglaries between 2010/11 and 2011/12



Source: Metropolitan Police Service CRIS data

2.4 Sanction and detection rates

Figure 6 shows that the sanction detection rate for burglary (i.e. burglary offences which result in an individual being charged for the offence) in Brent is similar to that for London as a whole. Indeed, sanction detection rates in Brent have been marginally better in Brent than the London average since 2011/12. For example, the sanction detection rate for residential burglary in Brent so far is 17.5% compared to a London average of 14.7%.

Figure 6: Sanction detection rates for burglary in Brent and across London - 2010/11 to 2012/13

Year	Residential burglary	Non-residential burglary	All burglary
Brent only			
2010/11	11.1%	7.9%	10.2%
2011/12	13.3%	13.3%	13.3%
2012/13 (up to May)	17.5%	7.7%	15.0%
London wide			
2010/11	12.5%	8.7%	11.2%
2011/12	9.5%	11.4%	10.2%
2012/13 (up to May)	14.7%	8.7%	12.5%

2.5 Characteristics of perpetrators

Initial intelligence from the Metropolitan Police suggests that there has been an increase in burglary suspects who are:

- Young people living in the local area and are associated with gangs, this is particularly true in the Harlesden/Stonebridge hotspot. In particular, there was a problem with a group of young people who were committing offences, being caught by the police, bailed, and then reoffending.
- Perpetrators that live outside Brent committing crime in Brent. Intelligence suggests that typically these offenders are highly organised and mobile and frequently commit crime over a wide geographical area, making them harder to target and locate.

This is a change from the more traditional profile of suspect, who is typically older, has a history of substance misuse and previous offences (although this group are still present in Brent).

More comprehensive information on the profile of suspects is currently being compiled and will be analysed as part of the Strategic Crime Needs Assessment.

2.6 How the burglary takes place

Initial intelligence from the Metropolitan Police indicates that the majority of offences were committed during day time hours with the main point of entry being the front of the property

(43%) where a door or window is forced. This is particularly true in the Harlesden/Stonebridge wards where there have been a number of repeat offences in blocks of flats in estates with a communal door being breached and a front flat door or window being kicked or forced. Point of entry via the rear accounted for 39% of offences.

3 Current and future actions

There is much effort being undertaken by partners in Brent to reduce burglary led by Brent's Integrated Community Safety Team and the Metropolitan Police Service. These include:

- **Operation Topple:** This is an intelligence-led operation by the Metropolitan Police to target the most active known burglars in Brent with increased surveillance and searches.
- **Data sharing:** The Metropolitan Police has shared with Brent Council intelligence of the most active burglars who are currently active in Brent. This information is being cross-referenced with information held by the Council. This information will be used through the next month to begin eviction proceedings against suspects that live in social housing and also whether it will be appropriate to use other available sanctions, such as Anti-Social Behaviour Orders.
- **Forensic retrieval:** This Metropolitan Police pro-actively collects and gathers forensic evidence in known burglary hotspots. Any information gathered can be cross-referenced with police data, such as the Police National Computer (PNC) to identify suspects and activity in these areas.
- **Targeted work on housing estates:** The Metropolitan Police undertake targeted work on housing estates which have known issues with burglary. This includes increased patrols, intelligence-led house searches and other preventative work.
- **Strengthening of communal doors in social housing:** Brent Council is liaising with Registered Social Landlords to strengthen communal doors in social housing properties. If a burglar can get past a communal door in a block of flats or house with multiple occupants, they can very quickly burgle a number of properties. Strengthening a communal door can prevent perpetrators getting into the property in the first place. Brent Council will offer to pay for 50% of the costs of replacing communal doors and will target roughly 40 properties. These doors will have Secure By Design status, be fitted by a security expert and meet standards agreed by Brent Council and the Metropolitan Police.
- **Crime prevention day and breakfasts with registered social landlords:** Brent Integrated Community Safety Team is arranging crime prevention days in each locality to publicise information on how the public can protect their properties from burglary. As part of this prevention work, the Integrated Community Safety team will also be arranging breakfast events with Registered Social Landlords to discuss improving security at their properties and discuss other prevention strategies.

There are also ward-specific actions being taken to reduce burglary by partners in Brent. Actions that the Integrated Community Safety Team is aware of are set out at Figure 7.

Figure 7: Actions being taken to reduce burglary within wards in Brent

Ward	Actions
Alperton	<ul style="list-style-type: none"> Burglary follow-up visits to all victims and offering crime prevention visits to residents in the ward to help prevent more burglaries from occurring. Targeted stop and searches. Increased uniform and plain clothed patrols in hotspots. Conducting street briefings in hotspot areas to help make residents of the ward more aware of crime. Weekly visits to key local people, advising the Integrated Community Safety Team of issues.
Barnhill	Actions being taken to reduce burglary include deploying more plain clothes patrols in hotspot areas.
Brondesbury Park	<p>Actions being taken to reduce burglary are targeted on the Chatsworth Road, Cavendish Road and Willesden Lane areas and include:</p> <ul style="list-style-type: none"> CCTV vans placed in the hotspot area Covert patrolling Increased stop and searches Visits to victims and cocooning of areas Operation Bumblebee crime prevention packs delivered Crime prevention plans for victims Street briefing
Dollis Hill	Burglary is tackled as part of the general policing, crime prevention and anti-gang work taken place in this ward.
Dudden Hill	<p>Actions being taken in this ward include:</p> <ul style="list-style-type: none"> Over 1,000 leaflets delivered to households in hotspot areas Crime prevention seminar held at the college of North West London for all concerned residents. Regular high visibility patrols in the area Crime prevention follow-ups at any homes burgled
Fryent	Actions are focused on the Springfield Estate and Springfield Gardens and include high visibility patrols as well as plain clothes and crack house closure.
Harlesden	Burglary is tackled as part of the general policing, crime prevention and anti-gang work taken place in this ward.
Kensal Green	<p>Actions being taken are focused on the Wrottesley Road and Holland Road areas. These include:</p> <ul style="list-style-type: none"> High visibility patrols in the area Street briefings in affected areas Follow-up visits to burglary victims, giving crime prevention advice Liaising with Borough Intelligence Unit at Metropolitan Police to target known burglary suspects living in the ward and executing search warrants at these addresses where intelligence indicates. Use of Safer Neighbourhood Team Task Force Officers CCTV van during relevant times.
Kenton	Burglary is tackled as part of the general policing, crime prevention and anti-gang work taken place in this ward.

Ward	Actions
Kilburn	<p>Actions are focused on the area north of Glengall Road, south of Willesden Lane, east of Tennyson Road and Willesden Lane and West of Kilburn High Road. These include:</p> <ul style="list-style-type: none"> • Uniform and plain clothes patrols in identified hotspot areas. • Targeted strengthening of security at premises identified as vulnerable to burglary (i.e. windows left open or property on display), then crime prevention advice given to occupier or a card left. • Street briefing and crime prevention surgeries in identified hotspot areas. • Regular messages on crime updates and any issues of note to persons on Neighbourhood link distribution list
Mapesbury	<p>Burglary is tackled as part of the general policing, crime prevention and anti-gang work taken place in this ward.</p>
Northwick Park	<p>Actions being taken include:</p> <ul style="list-style-type: none"> • Northwick Park SNT will be identifying the most problematic areas across the ward and speaking to all residents, offering crime prevention advice and targeting these areas for increased patrols, to gather intelligence and reduce the affects of crime across the community. • Obtaining mobile alarms, timers and personal attack alarms to increase safety across the whole of the ward.
Preston	<p>Burglary is tackled as part of the general policing, crime prevention and anti-gang work taken place in this ward.</p>
Queensbury	<p>Actions being taken to reduce offences include:</p> <ul style="list-style-type: none"> • High visibility patrols • Burglary hotspots to be identified on a fortnightly basis to concentrate patrols • Ward based operations to stop vans/lorries/other vehicles that are likely linked to burglaries and scrap metal haulage so as to ascertain correct ownership of goods.
Queens Park	<p>Actions being taken to reduce burglary include:</p> <ul style="list-style-type: none"> • Plain clothes and uniform officers patrol identified hotspot areas • Conducted surgeries and offered crime prevention advice and property marking • Regular messages on crime updates and any issues of note to persons on Neighbourhood link distribution list.
Stonebridge	<p>Burglary is tackled as part of the general policing, crime prevention and anti-gang work taken place in this ward.</p>
Sudbury	<p>Burglary is tackled as part of the general policing, crime prevention and anti-gang work taken place in this ward.</p>
Tokyngton	<p>Actions being taken include:</p> <ul style="list-style-type: none"> • Tokyngton Safer Neighbourhood Team have increased patrols around the worst affected areas targeting the specific vulnerable times. • Crime prevention surveys have been undertaken of premises with key crime prevention needs. • Valuable items of property have been property marked and a large amount of property registered on the Hermes system. • Brent Council also provided funding for crime prevention equipment to be distributed in the area.
Welsh Harp	<p>Actions being taken include:</p> <ul style="list-style-type: none"> • Crime prevention stalls

Ward	Actions
	<ul style="list-style-type: none"> Over 200+ window alarms distributed
Wembley Central	Burglary is tackled as part of the general policing, crime prevention and anti-gang work taken place in this ward.
Willesden Green	Burglary is tackled as part of the general policing, crime prevention and anti-gang work taken place in this ward.

4 Next steps

Over the next month, the Metropolitan Police is collating more detailed information on burglary which will be incorporated into Brent’s strategic crime needs assessment. This will include more detailed information on the profile of suspects, details on the types of offences and properties targeted. The needs assessment will be completed in September and more detailed, longer term plans and strategies will be developed based on the findings from this report.



Partnership & Place Overview & Scrutiny Committee

25 July 2012

Report from the Director of Strategy, Partnership & Improvement

Wards Affected:
ALL

Changing the Delivery of Crime Reduction – Local Joint Action Groups

1.0 Summary

- 1.1 At the last meeting the Partnership & Place asked for a more detailed report on the Changing the Delivery of Crime Reduction project outline in the Partners for Brent progress report. This report does that by focusing on the introduction of the Local Joint Action Groups which are designed to streamline the delivery structure of Brent's Crime Prevention Strategy group.

2.0 Recommendations

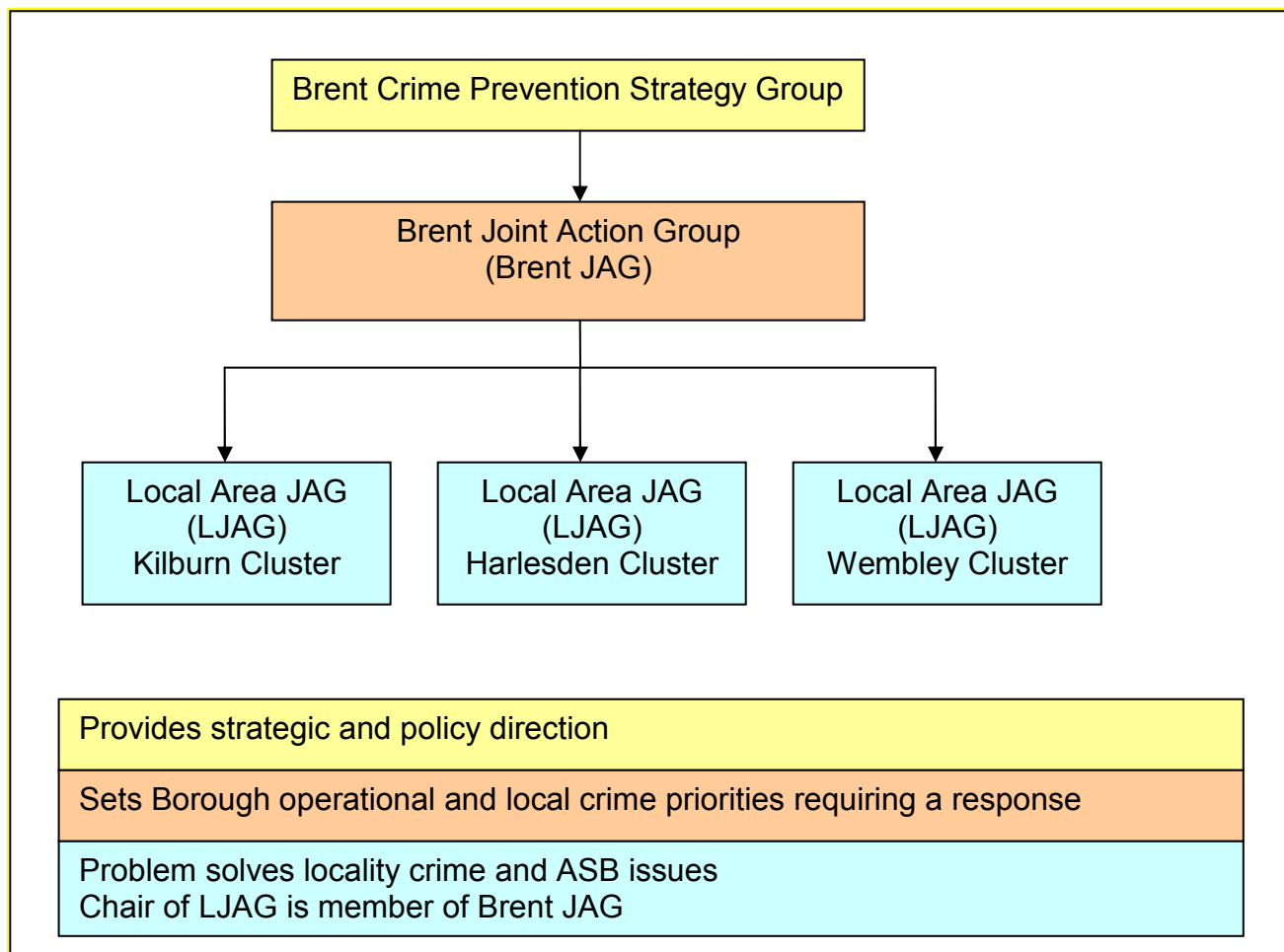
- 2.1 The committee notes and comments on the contents of the report.

3.0 Background

- 3.1 Following a review in 2011 of the delivery structure for Brent Crime Prevention Strategy Group (CPSG), Brent's Community Safety Partnership (CSP), it was decided to streamline the delivery structure and sub-groups sitting under CPSG.
- 3.2 In order to establish a more 'problem orientated' approach and adopt an intelligence led business process¹, Brent CPSG deleted a number of sub groups and considered the introduction of Local Joint Action Groups (LJAGs).
- 3.3 Problems solving models implemented by other Community Safety Partnerships were considered. Officers from Brent Community Safety

Partnership Unit and Brent Police visited Sunderland Safer Partnership and Redbridge Safer Communities Partnership.

4.0 Looking local - Format & structure



- 4.1 The three LJAG's are managed by officers from Brent Integrated Community Safety Team. Referrals are sent directly to these officers who assess whether they require the input of the LJAG.
- 4.2 To date the LJAG's have met regularly and have generally all had a good attendance from partners. Minutes and agenda's are sent out on time with sufficient details of the cases that will be heard at LJAGs, allowing partners to make informed decisions and agree actions.
- 4.3 Task and Finish Groups (TFG's) have successfully been set up as and when required. They have assisted the LJAG's to focus in on more complex issues and relieve the main LJAG from lengthy discussions about a single problem.
- 4.4 General feed back from partners on the effectiveness of the LJAG's has included the following comments:

- 'I feel it is an invaluable tool in pooling resources and getting things done, enjoyable and useful'
- 'Works well in its current format'
- 'The referral process works well, we are briefed with good information'
- 'Problems are resolved quickly as a result of good partnership working'
- 'Information on referrals has improved since the LJAG's started last year'
- 'Problems that have been presented have gone through a good process to achieve good outcomes'
- 'Referrals need to come from a wider selection of agencies'
- 'Good partnership working, sharing of information has helped resolve cases and ensuring actions have been followed'
- 'Voluntary sector should refer more cases'

5. What is in what is not?

5.1 The LJAG terms of reference clearly set out the criteria for referrals and the focus of the LJAG's. All the Ljag's are closely following the terms of reference, however these should now be reviewed by the respective LJAG's in order to improve or amend if needed.

5.2 Partners were asked if there was anything the LJAG's did not cover and they felt it should. Partners felt:

- the current format and contents work well
- Particular agencies and teams remain unrepresented and are crucial to the process for example social services and mental health.
- More information is needed around the development and intelligence of gangs
- There needs to be more representation and referrals coming from other departments of the council
- Individual cases of 'Earn your Travel Back' scheme should not be discussed at the LJAG's as they do not follow the criteria and aims of the LJAG's.
- All cases referred should go through Brent Integrated Community Safety Team officers managing the LJAG's and assessed as to whether they are suitable to be responded to by the LJAG. Chairs should be consulted if required.

5.3 Initially there were referrals of individual cases and this has now stopped. Where the case involves domestic violence, this is referred to the appropriate agency using clear referral pathways.

6. Potential, limitations and risks

6.1 Potential limitations and risks highlighted by partners include:

- The meetings still last two hours, if cases are dealt with they are taken of the agenda unless something contrary comes to light.
- Some organisations provide Brent wide services and are having to attend all three LJAG's which can be quite resource intensive especially where partners are providing services across a number of boroughs
- The profile of the LJAG's requires raising and publicity, this includes its successes and encouragement of more partners coming on board
- There is a risk of LJAG's not working towards improving the partnership response to certain common factors such as mental health
- Policing cuts may have an impact on the LJAG's and the contribution of the Police
- Partners need to provide feedback and progress updates on cases in a timely manner to avoid delays in achieving the desired outcomes
- The Olympics and police resources during this period will impact on the LJAG's
- There is still room to improve the support form a wider range of agencies
- Limitations around information sharing need clarity on what can and cannot be shared, what is relevant? Also limitation around lack of information around funding available to support the LJAG's
- General commitment from partners to support the LJAG's despite cuts and restructure and the process is useful and saves time
- A potential risk due to restructure, cuts or changes to organisational priorities may result in reduced referrals and reduced partnership attendance
- Not having the Brent Joint Action Board running impacts on the support the LJAG's should be getting from this 'parent' forum. It provides an opportunity for the chairs of the three LJAG's to come together and can provide further direction as to what the LJAG's should be tackling in their clusters
- LJAG's can be used more effectively to secure partnership action to respond to increasing crime trends in the clusters, success of this is based on the information, intelligence and data shared with partners to enable them to respond

7. Recent Achievements

Harlesden LJAG

- 7.1 The LJAG has met 8 times, received 24 referrals to date and has established 3 task and finish groups.
- 7.2 The Harlesden LJAG has been focussing on crime and ASB issues in the Kensal Green Ward (Willow Terrace), Barnhill Ward (Chalkhill Estate), Harlesden Ward (Challenge Close and Odeon Court). Reports responded to include drug dealing, prostitution, litter, alcohol debris, poor lighting, overgrown bushes, individuals gaining false entry into premises and

intimidation of residents. Other areas being responded to are Ace Cafe and Mitchell Brook Way in the Stonebridge ward.

- 7.3 Challenge Close – Harlesden Ward: Actions agreed by Harlesden LJAG included high visibility patrols, outreach by Brent CRI to engage with sex workers identified, park service's carrying out a cleansing of the area removing debris, litter, mattresses and make shift tents which were being used as a shelter for prostitution. Lighting was also assessed and shrubs, bushes cut back. These actions helped reduce the amount of blind spots where sexual activity was taking place. Work is still ongoing with long term plans being considered to change location into a community garden. Reports have reduced however the police and CRI continue to visit the location on a regular basis.
- 7.4 Odeon Court - Harlesden Ward: Actions agreed included change of police shift patterns to ensure police presence at the time incidents were taking place. Residents were provided with re-assurance and potential offenders identified. Metropolitan Housing Trust (MHT) also installed a stronger communal door which only allows access with a fob, therefore not allowing individuals to enter to communal area and cause ASB. Residents have also been written to.
- 7.5 Willows Terrace – Kensal Green Ward: This location provides youths with a cut through to the High Street Harlesden. Reports were received of young male's drug dealing, using and urinating in the area. Evidence was gathered to support a dispersal order to prevent the large groups gathering in the area and causing ASB, it has also provided respite to residents. Drugs outreach services were provided by CRI to engage with the individuals. Negotiations with Stadium Housing to install a gate and sensor lighting in the area were successful. No further reports have been received from the local community or the landlords. Kensal Green Police Safer Neighbourhood Team has confirmed that groups no longer congregate in the area.

Kilburn LJAG

- 7.6 The Kilburn LJAG has been responding to issues at Peel Precinct in South Kilburn, Unity Close, Newfield Rise and the following up on the individuals identified as causing gang related ASB and crime in the South Kilburn area.
- 7.7 Actions have included moving a vulnerable individual to St. Mungo's Care Home after there were reports that his flat was being used to sell and take drugs. Whilst evidence was being gathered daily welfare checks were conducted and partners worked together to identify the individuals concerned and put the appropriate support in place for the vulnerable adult.
- 7.8 In the Unity Close area evidence was gathered for a group of individuals involved in robberies and burglaries. Residents reported being abused, communal doors being broken, loitering and a particular individual bringing

large groups of boys on to the estate. The Police SNT set up a street briefing for residents, engaged with the local community and were successful in obtaining a description of the individual concerned. All the boys were identified, meetings took place with all of them and their parents, written warnings were issued.

- 7.9 The ring leader and his family were referred to social care as there were serious issues of parental support. The children were taken into care and the family moved out of Willesden. Funding was also secured from Brent Joint Action Board to deliver outreach to the young people in the area who had been affected by the crime and ASB. Feedback from residents is that the ASB has drastically reduced from the group and the targeted interventions successfully focussed on the underlying cause of the problem.
- 7.10 ASB problems at Newfield Rise were resolved by obtaining an Anti-social Behaviour Injunction on the alleged perpetrator banning him from the area. Close partnership working took place with Brent's MARAC and the Police Community Safety Unit as there were also reports of domestic violence, alcohol abuse and issues of adult safeguarding.

Wembley Central LJAG

- 7.11 Wembley High Road- Fly tipping, ASB, housing issues relating to HMO properties and KHAT house causing ASB in the area. Actions included businesses written to by environmental services and notices served to those who were causing the problems, ensuring they all have waste contracts. Landowners written to about disposing their rubbish as well. There has been a reduction in fly tipping and rubbish. The case is being monitored. London Fire Service has visited the HMO's, provided advice on fire safety and fire safety checks conducted.
- 7.12 Hirst Crescent – Preston – ASB issues. RSL's have taken appropriate action i.e. one tenant had mental health problems, one tenant took out a non-molestation order against her son who was also part of the group causing problems and a number of arrests by the police. Landlords include Catalyst and Asra. A task and finish group has been set up to manage this case.
- 7.13 Farm Avenue – Sudbury – Small block run by BHP, issues of ASB, youths congregating in communal areas and visiting one particular address. A female was identified as being the cause of the individuals coming and causing ASB. Residents leafleted by BHP and SNT. Incidents reduced no further reports.
- 7.14 Alperton Village – a new development. There were issues with Tamil gangs hanging around Atlip Road and canal area. They intimidate businesses and do not live in the area. The canal bridge was not properly lit up and a potential mugging hotspot – partners are looking at lighting. A dispersal was implemented and ASB reports have reduced. We are awaiting the names of the individuals to assess each one and agree appropriate action.

- 7.15 Wembley LJAG considered two individuals who were causing ASB on transport and part of the Earn youth Travel Back Scheme, the LJAG decided the travel concession should be withdrawn.

Background Papers

Contact Officers

Genny Renard
Head of Integrated Community Safety
Genny.Renard@brent.gov.uk

This page is intentionally left blank

**Partnership & Place Overview & Scrutiny Committee Work Programme 2012/13
Chair Cllr Van Kalwala**

Date of Meeting	Agenda item	Requested Information / Evidence	Invited witnesses	Notes
14th June 2012	Ward Working Annual Report	A report that details the work of the Ward Working Team in 2011/12	Christine Collins Cllr Jones Lead member and Member of the Member reference group	
	Partners for Brent Executive Progress report Q4	A report that sets out progress on delivering the work programme of Partners for Brent	Jo McCormick Partnership Co-ordinator	
	Work Programme	A report that sets out a series of options for the committees work programme	Jacqueline Casson	
25th July	Crime Update	A report that sets out crime performance information and key issues	Genny Renard Head of Integrated Offender Management	
	Integrated Offender Management	A presentation on the key aspects of the policy		
	Changing the delivery of crime reduction - LJAGS	A report on the introduction and operation of Local Joint Action Groups	Genny Renard Head of Integrated Offender Management	

17 th October				
13 th December				

Other issues the committee would like to cover date to be confirmed:

- **Employment in Brent**
- **Policing in Brent – the Borough Commander will be invited to discuss policing issues in Brent**
- **Registered Social Landlord performance**
- **Council for Voluntary Services – update**
- **Crime Performance Information – regular updates**
- **Partners for Brent – updates on the delivery of their work programme**
- **Parking in the Borough**